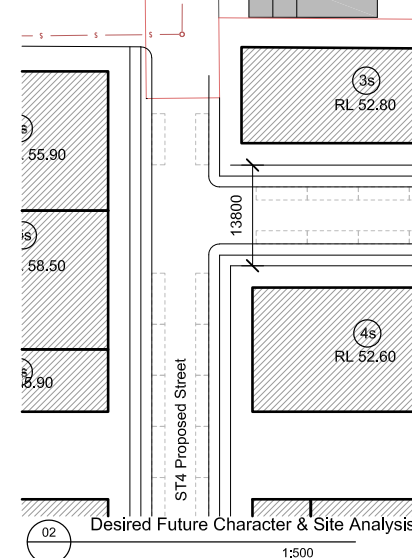


Existing Condition & Demolition Plan

1:500



Desired Future Character & Site Analysis

1:50

- DEVELOPMENT APPLICATION
887/2018
Randwick City Council
29 November 2018
Records Received

Project

Bates Smart Architects Pty Ltd ABN 68 094 740 986

Existing Conditions Demolition & Site Analysis Plan



Scale	1:500@A1 / 1:1000@A3	
Drawn	DN	Checked
Project No.	s11950A	
Status	Preliminary	
Plot Date	11/10/2017 9:12 AM	
Plot File	S:\11950-11999\11950_A_cbus_n270_CAD\Plots\DA\DA.N2.dwg ...-501\dwg	
Drawing No.	[Revision]	

DA.N2.00.001[B]

Do not scale drawings - refer to figured dimensions only. Any discrepancies shall immediately be referred to the architect for clarification.

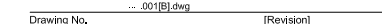
All drawings may not be reproduced or distributed without prior permission from the architect.

Randwick City Council
29 November 2018
Records Received

Project _____

Bates Smart Architects Pty Ltd ABN 68 094 740 986

Proposed Site and Roof Plan



DA.N2.01.001[B]

All drawings may not be reproduced or distributed without prior permission from the architect.

Randwick City Council
29 November 2018
Records Received

Project _____

Bates Smart Architects Pty Ltd ABN 68 094 740 986

Drawing No. [] [Revision] []

DA.N202.001[D]

ST2 PROPOSED STREET

Check all dimensions and site conditions prior to commencement of any work, the purchase or ordering of any materials, fittings, plant, services or equipment and the preparation of shop drawings and/or the fabrication of any components.

All drawings to be read in conjunction with all architectural documents and all other consultants documents.

Do not scale drawings - refer to figured dimensions only. Any discrepancies shall immediately be referred to the architect for clarification.

All drawings may not be reproduced or distributed without prior permission from the architect.

- L Living
- D Dining
- B1 Bedroom 1
- B2 Bedroom 2
- B3 Bedroom 3
- BT Bathroom
- E Ensuite
- K Kitchen
- Bal Balcony
- T Terrace

DEVELOPMENT APPLICATION

887/2018

Randwick City Council
29 November 2018
Records Received

D	21/11/18	Draft DA Submission	KB	MA
C	26/10/18	Draft DA Submission	CV	MA
B	20/09/17	DEP Amendments	SK	HC
A	26/05/17	Randwick DEP Submission	JJF	MA
Revision Date		Description	Initial	Checked
Project				

BATESSMART

Melbourne 1 Nicholson Street
Melbourne VIC 3000 Australia
T 03 8664 6200 F 03 8664 6300
http://www.batesmart.com.au

Sydney 43 Brisbane Street
Surry Hills NSW 2010 Australia
T 02 8354 5100 F 02 8354 5199
http://www.batesmart.com.au

Bates Smart Architects Pty Ltd ABN 68 094 740 986

**Lot N2, Newmarket Green
Barker St Randwick NSW**

Lot N2
Ground floor Plan

Scale	1:125@A1 / 1:250@A3
Drawn	JJF
Project No.	s11950A
Status	Preliminary
Plot Date	21/11/2018 12:24 PM
Plot File	S:\11950-11999\11950_a_cbus_n270_CAD\Plots\DA\DA.N202...
Drawing No.	100[D].dwg
[Revision]	

DA.N202.100[D]

Check all dimensions and site conditions prior to commencement of any work, the purchase or ordering of any materials, fittings, plant, services or equipment and the preparation of shop drawings and/or the fabrication of any components.

All drawings to be read in conjunction with all architectural documents and all other consultants documents.

Do not scale drawings - refer to figured dimensions only. Any discrepancies shall immediately be referred to the architect for clarification.

All drawings may not be reproduced or distributed without prior permission from the architect.

- L Living
D Dining
B1 Bedroom 1
B2 Bedroom 2
B3 Bedroom 3
BT Bathroom
E Ensuite
K Kitchen
Bal Balcony
T Terrace

DEVELOPMENT APPLICATION

887/2018

Randwick City Council
29 November 2018
Records Received

C 26/10/18 Draft DA Submission CV MA

B 20/09/17 DEP Amendments SK HC

A 26/05/17 Randwick DEP Submission JJF MA
Revision Date Description Initial Checked

Project

BATESSMART

Melbourne 1 Nicholson Street
Melbourne VIC 3000 Australia
T 03 8664 6200 F 03 8664 6300
http://www.batesSMART.com.au

Sydney 43 Brisbane Street
Surry Hills NSW 2010 Australia
T 02 8354 5100 F 02 8354 5199
http://www.batesSMART.com.au

Bates Smart Architects Pty Ltd ABN 68 094 740 986

Lot N2, Newmarket Green
Barker St Randwick NSW

Lot N2
Level 01 Plan

Scale 1:125@A1 / 1:250@A3
Drawn JJF Checked
Project No. s11950A
Status Preliminary
Plot Date 21/11/2018 12:25 PM
Plot File S:\11900-11999\11950_a_chus_n270_CAD\Plots\DA\DA.N202...
Drawing No. 101[C].dwg [Revision]

DA.N202.101[C]

Check all dimensions and site conditions prior to commencement of any work, the purchase or ordering of any materials, fittings, plant, services or equipment and the preparation of shop drawings and/or the fabrication of any components.

All drawings to be read in conjunction with all architectural documents and all other consultants documents.

Do not scale drawings - refer to figured dimensions only. Any discrepancies shall immediately be referred to the architect for clarification.

All drawings may not be reproduced or distributed without prior permission from the architect.

DEVELOPMENT APPLICATION

887/2018

Randwick City Council
29 November 2018
Records Received

C	11/10/17	DEP Amendments	SK	HC
---	----------	----------------	----	----

B	20/09/17	DEP Amendments	SK	HC
---	----------	----------------	----	----

A	26/05/17	Randwick DEP Submission	JJF	MA
Revision	Date	Description	Initial	Checked

Project

BATESSMART

Melbourne 1 Nicholson Street Melbourne VIC 3000 Australia T 03 8664 6200 F 03 8664 6300 http://www.batesmart.com.au	Sydney 43 Brisbane Street Surry Hills NSW 2010 Australia T 02 8354 5100 F 02 8354 5199 http://www.batesmart.com.au
------------------------------------------------------------------------------------------------------------------------------	-----------------------------------------------------------------------------------------------------------------------------

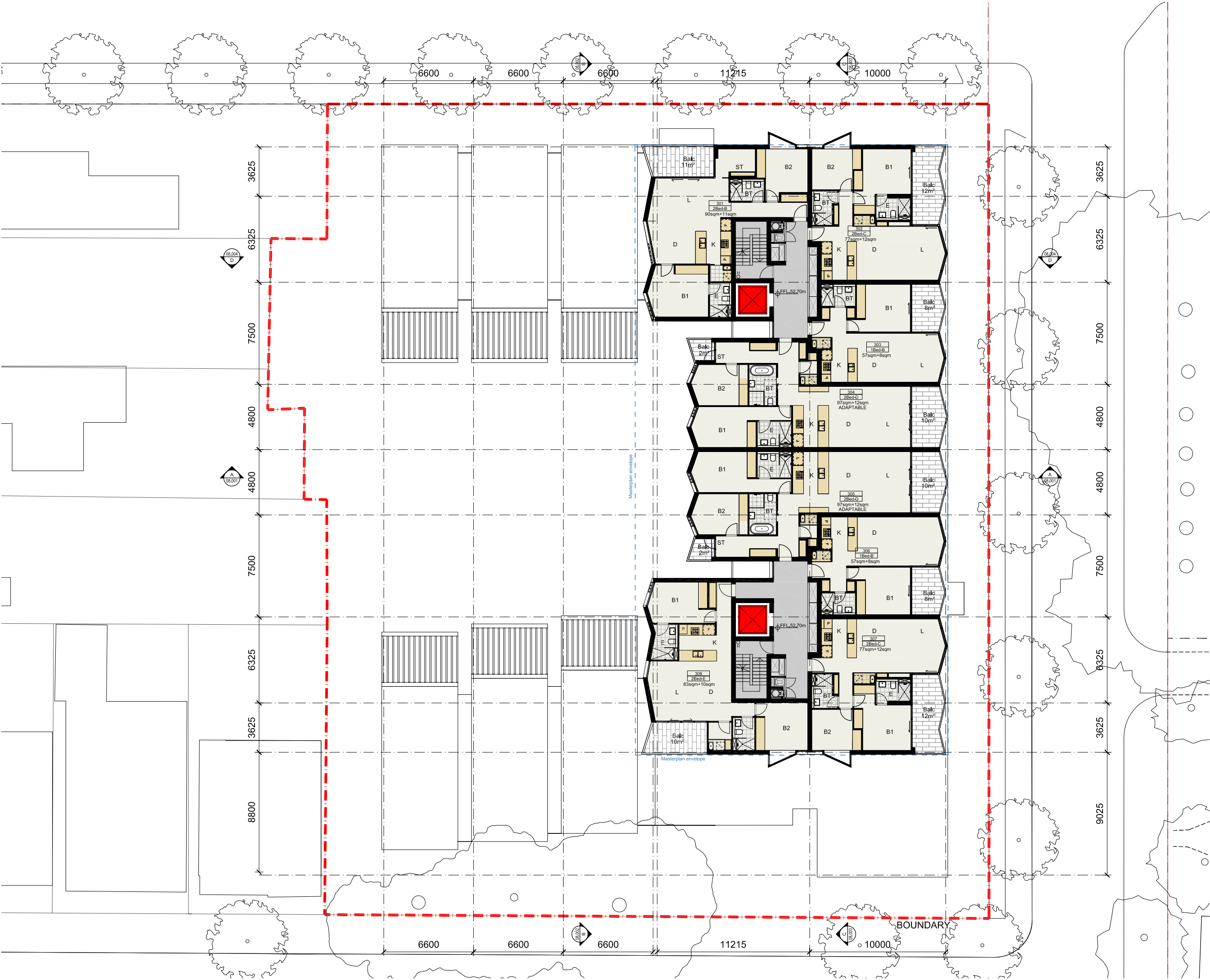
Bates Smart Architects Pty Ltd ABN 68 094 740 986

Lot N2, Newmarket Green
Barker St Randwick NSW

Lot N2
Level 2 Plan

Scale	1:125@A1 / 1:250@A3
Drawn	JJF
Project No.	s11950A
Status	Preliminary
Plot Date	21/11/2018 12:26 PM
Plot File	S:\11950-11999\11950_a_cbus_n270_CAD\Plots\DA\DA.N202... ... 102[C].dwg
Drawing No.	[Revision]

DA.N202.102[C]



Check all dimensions and site conditions prior to commencement of any work, the purchase or ordering of any materials, fittings, plant, services or equipment and the preparation of shop drawings and/or the fabrication of any components.

All drawings to be read in conjunction with all architectural documents and all other consultants documents.

Do not scale drawings - refer to figured dimensions only. Any discrepancies shall immediately be referred to the architect for clarification.

All drawings may not be reproduced or distributed without prior permission from the architect.

- L Living
- D Dining
- B1 Bedroom 1
- B2 Bedroom 2
- B3 Bedroom 3
- BT Bathroom
- E Ensuite
- K Kitchen
- Bal Balcony
- T Terrace

DEVELOPMENT APPLICATION

887/2018

Randwick City Council
29 November 2018
Records Received

B 20/09/17 DEP Amendments SK HC

A 26/05/17 Randwick DEP Submission JJF MA
Revision Date Description Initial Checked

Project

BATESSMART

Melbourne 1 Nicholson Street
Melbourne VIC 3000 Australia
T 03 8664 6200 F 03 8664 6300
http://www.batesmart.com.au

Sydney 43 Brisbane Street
Surry Hills NSW 2010 Australia
T 02 8354 5100 F 02 8354 5199
http://www.batesmart.com.au

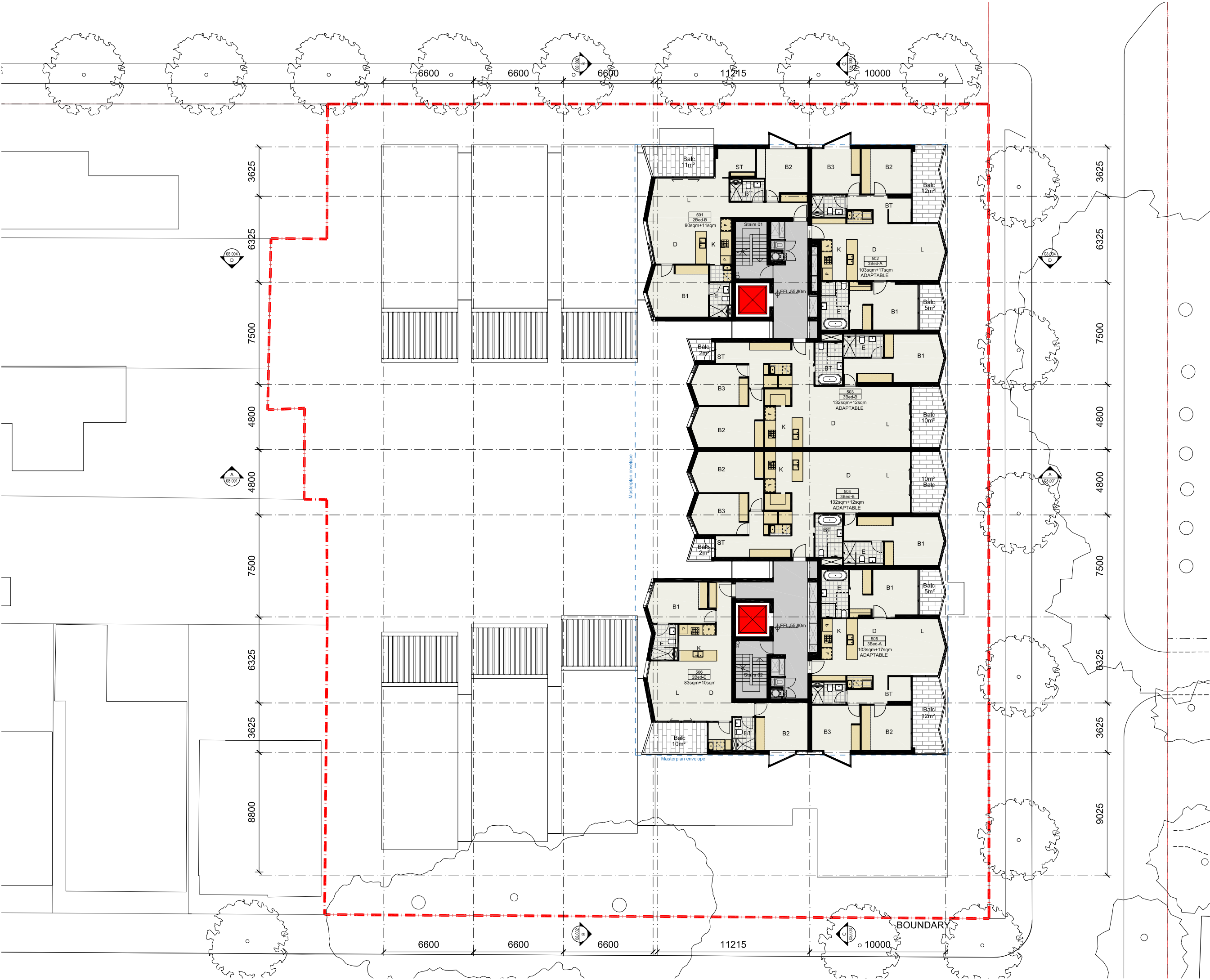
Bates Smart Architects Pty Ltd ABN 68 094 740 986

Lot N2, Newmarket Green
Barker St Randwick NSW

Lot N2
Level 3-4 Plan

Scale 1:125@A1 / 1:250@A3
Drawn JJF Checked
Project No. s11950A
Status Preliminary
Plot Date 21/11/2018 12:32 PM
Plot File S:\11900-11999\11950_a_cbus_n270_CAD\Plots\DA\DA.N202...
Drawing No. 103[B].dwg [Revision]

DA.N202.103[B]



Check all dimensions and site conditions prior to commencement of any work, the purchase or ordering of any materials, fittings, plant, services or equipment and the preparation of shop drawings and/or the fabrication of any components.

All drawings to be read in conjunction with all architectural documents and all other consultants documents.

Do not scale drawings - refer to figured dimensions only. Any discrepancies shall immediately be referred to the architect for clarification.

All drawings may not be reproduced or distributed without prior permission from the architect.

- L Living
- D Dining
- B1 Bedroom 1
- B2 Bedroom 2
- B3 Bedroom 3
- BT Bathroom
- E Ensuite
- K Kitchen
- Bal Balcony
- T Terrace

DEVELOPMENT APPLICATION

887/2018

Randwick City Council
29 November 2018
Records Received

B	20/09/17	DEP Amendments	SK	HC
A	26/05/17	Randwick DEP Submission	JJF	MA
Revision	Date	Description	Initial	Checked
Project				

BATESSMART

Melbourne 1 Nicholson Street
Melbourne VIC 3000 Australia
T 03 8664 6200 F 03 8664 6300
http://www.batesmart.com.au

Sydney 43 Brisbane Street
Surry Hills NSW 2010 Australia
T 02 8354 5100 F 02 8354 5199
http://www.batesmart.com.au

Bates Smart Architects Pty Ltd ABN 68 094 740 986

Lot N2, Newmarket Green
Barker St Randwick NSW

Lot N2
Level 5 Plan



Scale	1:125@A1 / 1:250@A3
Drawn	JJF
Project No.	s11950A
Status	Preliminary
Plot Date	21/11/2018 12:30 PM
Plot File	S:\11900-11999\11950_a_cbus_n270_CAD\Plots\DA\DA.N202... ... 104[B].dwg
Drawing No.	[Revision]

DA.N202.104[B]

All drawings may not be reproduced or distributed without prior permission from the architect.

Randwick City Council
29 November 2018
Records Received

Project

Bates Smart Architects Pty Ltd ABN 68 094 740 986

Drawing No. [Revision]

DA.N202.106[B]

Check all dimensions and site conditions prior to commencement of any work, the purchase or ordering of any materials, fittings, plant, services or equipment and the preparation of shop drawings and/or the fabrication of any components.

All drawings to be read in conjunction with all architectural documents and all other consultants documents.

Do not scale drawings - refer to figured dimensions only. Any discrepancies shall immediately be referred to the architect for clarification.

All drawings may not be reproduced or distributed without prior permission from the architect.

MATERIAL LEGEND

- VS Vertical shading screen - grey/ silver
BR Brick - red/ purple
GC Clear glazing
GO Operable glazing
MA Aluminium awnings - dark grey
MHG Projected aluminium hoods - dark grey
RFP Routed facade panel - grey
PFP Perforated facade panel - stone
MP Metal paneling - dark grey
RW Retaining wall - concrete
F Palsade fencing - grey/ silver
GCL Colourback glass

DEVELOPMENT APPLICATION

887/2018

Randwick City Council
29 November 2018
Records Received



1 Middle Street Elevation

South 1:125



2 ST2 Proposed Street Elevation

North 1:125

D	26/10/18	Draft DA Submission	CV	MA
C	11/10/17	DEP Amendments	SK	HC
B	20/09/17	DEP Amendments	SK	HC
A	26/05/17	Randwick DEP Submission	JJF	MA
Revision	Date	Description	Initial	Checked

Project

BATESSMART

Melbourne 1 Nicholson Street
Melbourne VIC 3000 Australia
T 03 8664 6200 F 03 8664 6300
http://www.batesmart.com.au

Sydney 43 Brisbane Street
Surry Hills NSW 2010 Australia
T 02 8354 5100 F 02 8354 5199
http://www.batesmart.com.au

Bates Smart Architects Pty Ltd ABN 68 094 740 986

Lot N2, Newmarket Green
Barker St Randwick NSW

Lot N2
Elevations

Scale	1:125@A1 / 1:250@A3
Drawn	DN Checked
Project No.	s11950A
Status	Preliminary
Plot Date	21/11/2018 12:34 PM
Plot File	S:\11900-11999\11950_a_cbus_n2\70_CAD\Plots\DA\DA.N207... ... 001[D].dwg
Drawing No.	[Revision]

DA.N207.001[D]

Check all dimensions and site conditions prior to commencement of any work, the purchase or ordering of any materials, fittings, plant, services or equipment and the preparation of shop drawings and/or the fabrication of any components.

All drawings to be read in conjunction with all architectural documents and all other consultants documents.

Do not scale drawings - refer to figured dimensions only. Any discrepancies shall immediately be referred to the architect for clarification.

All drawings may not be reproduced or distributed without prior permission from the architect.

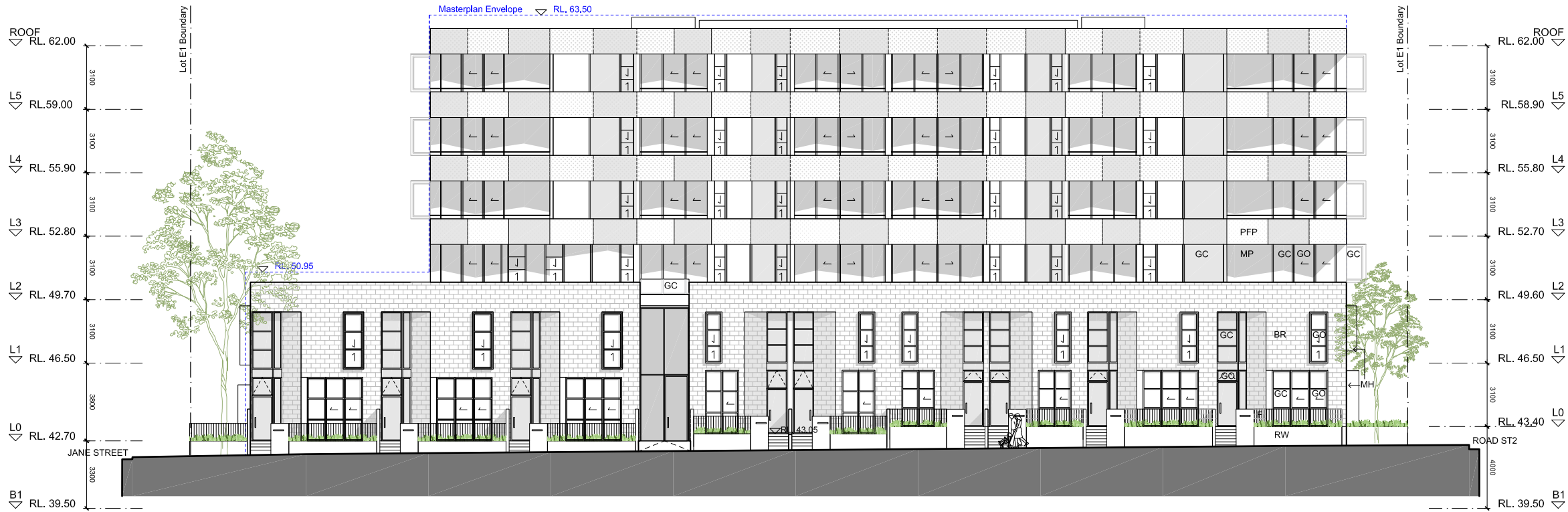
MATERIAL LEGEND

- VS Vertical shading screen - grey/ silver
BR Brick - red/ purple
GC Clear glazing
GO Operable glazing
MA Aluminium awnings - dark grey
MHG Projected aluminium hoods - dark grey
RFP Routed facade panel - grey
PFP Perforated facade panel - stone
MP Metal paneling - dark grey
RW Retaining wall - concrete
F Palisade fencing - grey/ silver
GCL Colourback glass

DEVELOPMENT APPLICATION

887/2018

Randwick City Council
29 November 2018
Records Received



1 Young Street Elevation

East 1:125



2 Boundary Elevation

West 1:125

B 20/09/17 DEP Amendments SK HC

A 26/05/17 Randwick DEP Submission JJF MA
Revision Date Description Initial Checked

Project

BATESSMART

Melbourne 1 Nicholson Street
Melbourne VIC 3000 Australia
T 03 8664 6200 F 03 8664 6300
http://www.batesmart.com.au

Sydney 43 Brisbane Street
Surry Hills NSW 2010 Australia
T 02 8354 5100 F 02 8354 5199
http://www.batesmart.com.au

Bates Smart Architects Pty Ltd ABN 68 094 740 986

Lot N2, Newmarket Green
Barker St Randwick NSW

Lot N2
Elevations

Scale	1:125@A1 / 1:250@A3
Drawn	DN Checked
Project No.	s11950A
Status	Preliminary
Plot Date	11/10/2017 9:15 AM
Plot File	S:\11900-11999\11950_a_chus_n2\70_CAD\Plots\DA\DA.N207... ... 002[B].dwg
Drawing No.	[Revision]

DA.N207.002[B]

Check all dimensions and site conditions prior to commencement of any work, the purchase or ordering of any materials, fittings, plant, services or equipment and the preparation of shop drawings and/or the fabrication of any components.

All drawings to be read in conjunction with all architectural documents and all other consultants documents.

Do not scale drawings - refer to figured dimensions only. Any discrepancies shall immediately be referred to the architect for clarification.

All drawings may not be reproduced or distributed without prior permission from the architect.

MATERIAL LEGEND

- VS Vertical shading screen - grey/ silver
- BR Brick - red/ purple
- GC Clear glazing
- GO Operable glazing
- MA Aluminium awnings - dark grey
- MHG Projected aluminium hoods - dark grey
- RFP Routed facade panel - grey
- PFP Perforated facade panel - stone
- MP Metal paneling - dark grey
- RW Retaining wall - concrete
- F Palsade fencing - grey/ silver
- GCL Colourback glass

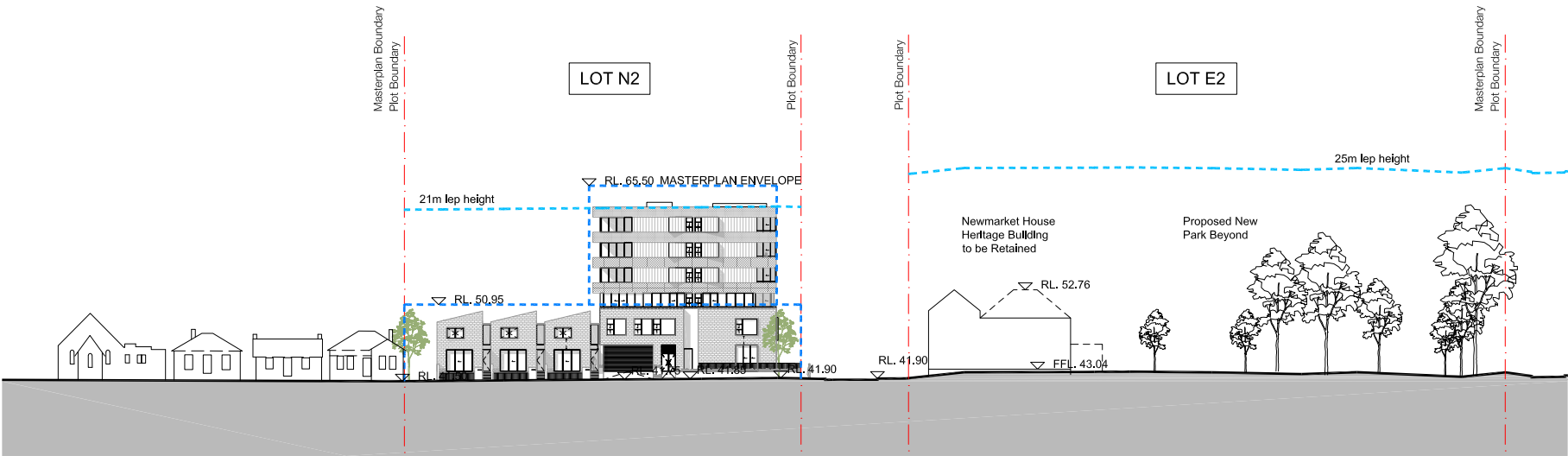
DEVELOPMENT APPLICATION

887/2018

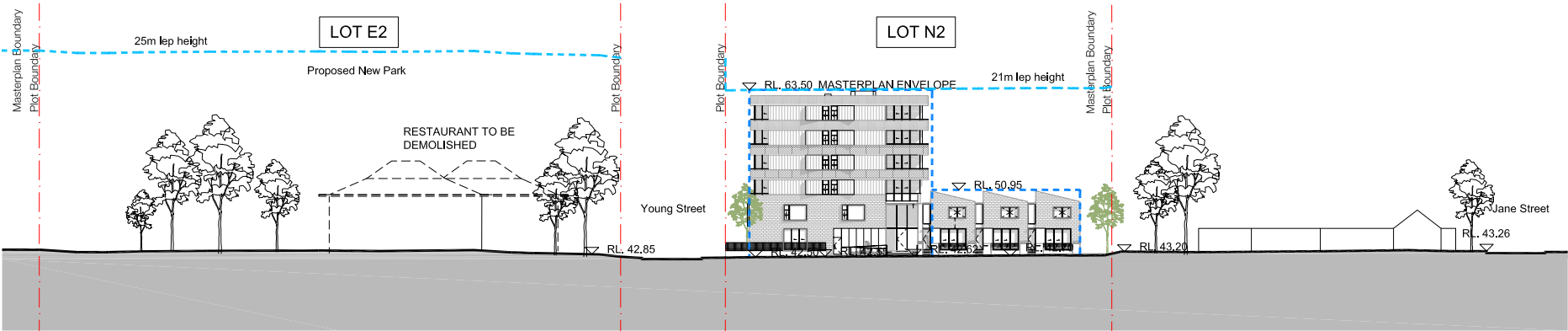
Randwick City Council

29 November 2018

Records Received



1 Middle Street Elevation
South 1:400



2 ST2 Proposed Street Elevation
North 1:400

A	DEP Amendments	YL	HC
Revision	Date	Description	Initial Checked

Project

BATESSMART

Melbourne 1 Nicholson Street
Melbourne VIC 3000 Australia
T 03 8664 6200 F 03 8664 6300
http://www.batesmart.com.au

Sydney 43 Brisbane Street
Surry Hills NSW 2010 Australia
T 02 8354 5100 F 02 8354 5199
http://www.batesmart.com.au

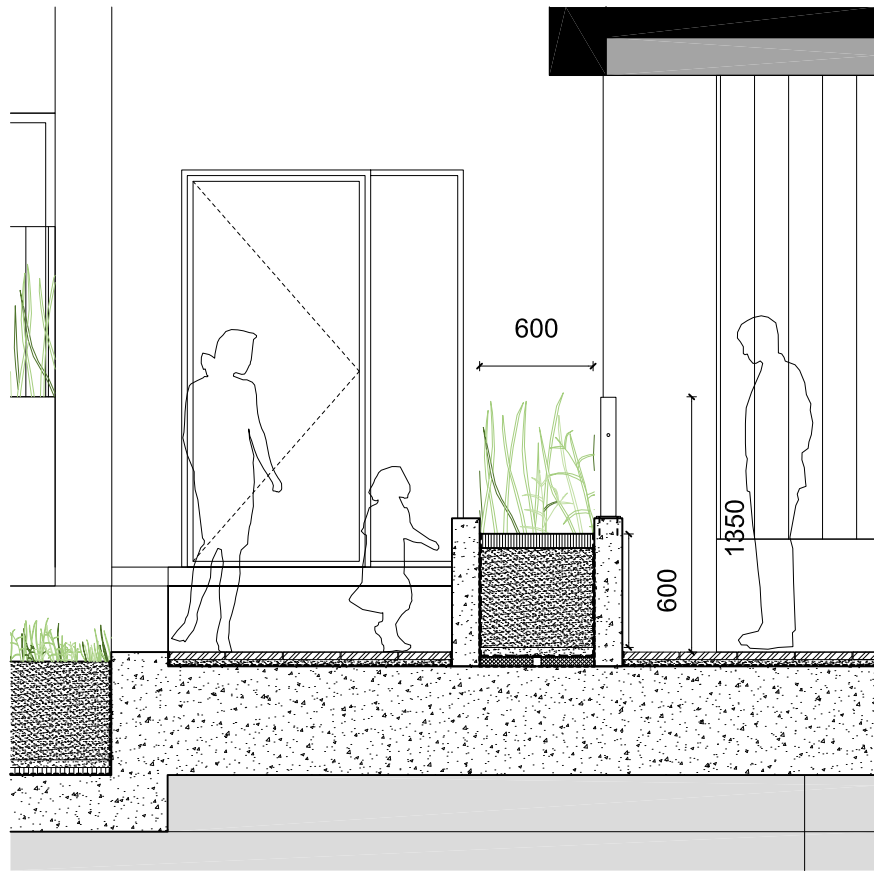
Bates Smart Architects Pty Ltd ABN 68 094 740 986

Lot N2, Newmarket Green
Barker St Randwick NSW

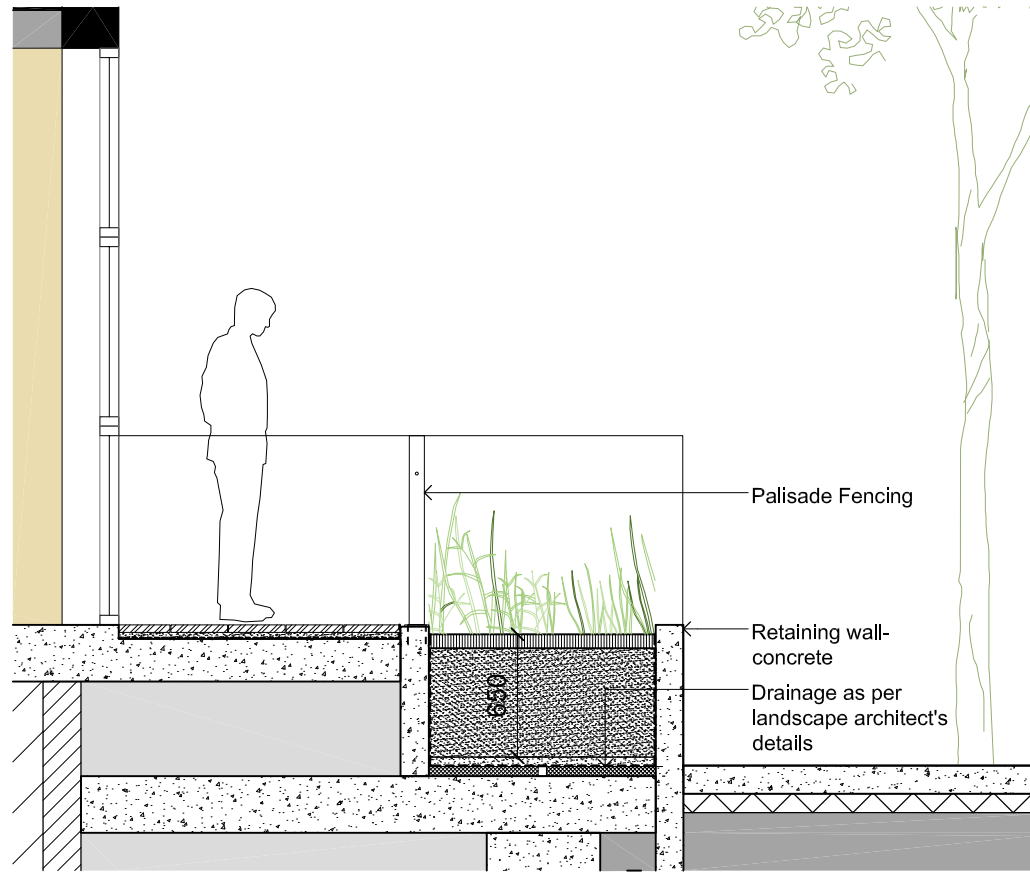
Lot N2
Street Elevations

Scale	1:400@A1 / 1:800@A3
Drawn	YL Checked
Project No.	s11950A
Status	Preliminary
Plot Date	11/10/2017 9:15 AM
Plot File	S:\11900-11999\11950_a_cbus_n2\70_CAD\Plots\DA\DA.N207... ... 003[A].dwg
Drawing No.	[Revision]

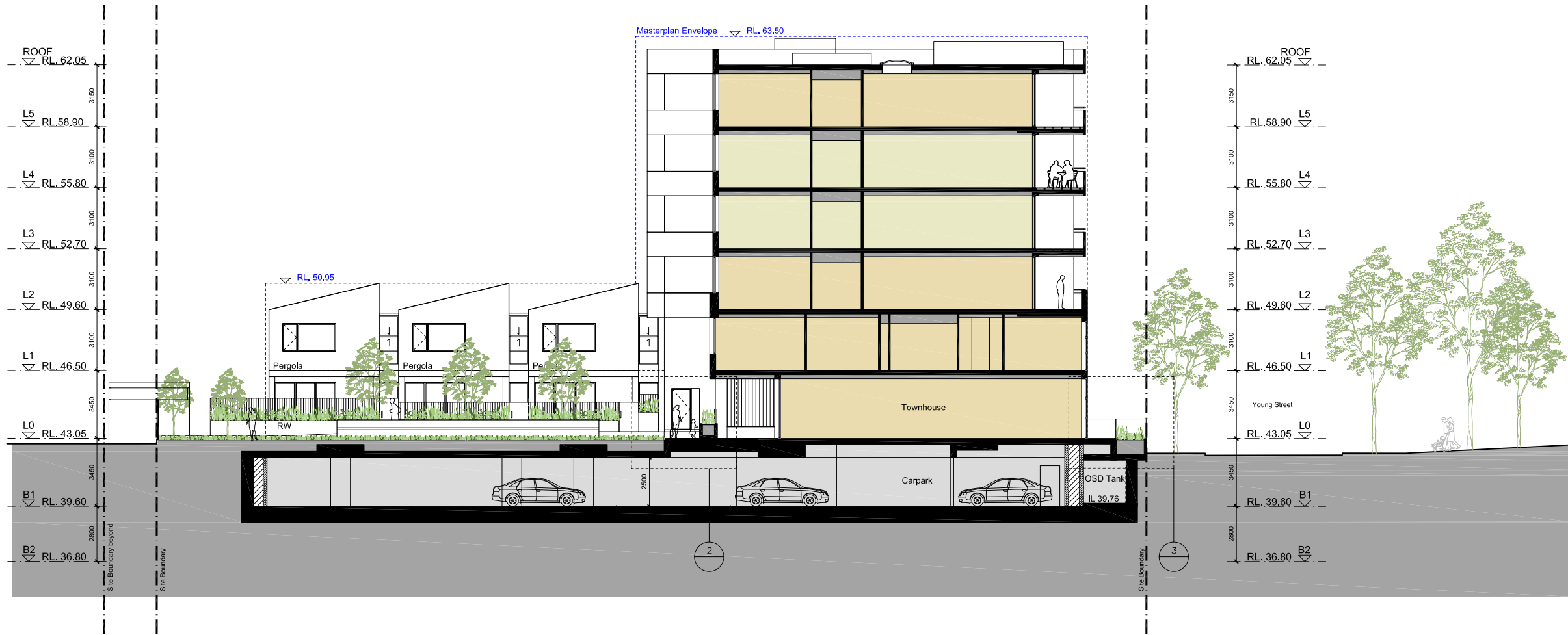
DA.N207.003[A]



2 Detail Section
Planter to Communal Space 1:20



3 Detail Section
Planter to Young Street 1:20



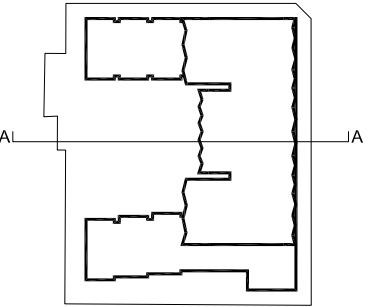
1 Section AA 1:125

Check all dimensions and site conditions prior to commencement of any work, the purchase or ordering of any materials, fittings, plant, services or equipment and the preparation of shop drawings and/or the fabrication of any components.

All drawings to be read in conjunction with all architectural documents and all other consultants documents.

Do not scale drawings - refer to figured dimensions only. Any discrepancies shall immediately be referred to the architect for clarification.

All drawings may not be reproduced or distributed without prior permission from the architect.



DEVELOPMENT APPLICATION
887/2018
Randwick City Council
29 November 2018
Records Received

C	26/10/18	Draft DA Submission	CV	MA
B	20/09/17	DEP Amendments	SK	HC
A	26/05/17	Randwick DEP Submission	JJF	MA
Revision	Date	Description	Initial	Checked
Project				

BATESSMART

Melbourne 1 Nicholson Street
Melbourne VIC 3000 Australia
T 03 8664 6200 F 03 8664 6300
http://www.batesmart.com.au

Sydney 43 Brisbane Street
Surry Hills NSW 2010 Australia
T 02 8354 5100 F 02 8354 5199
http://www.batesmart.com.au

Bates Smart Architects Pty Ltd ABN 68 094 740 986

**Lot N2, Newmarket Green
Barker St Randwick NSW**

Lot N2
Section A-A

Scale	1:125@A1 / 1:250@A3
Drawn	JJF
Project No.	s11950A
Status	Preliminary
Plot Date	21/11/2018 12:35 PM
Plot File	S:\11900-11999\11950_a_cbus_n270_CAD\Plots\DA\DA.N208... ... 001[C].dwg
Drawing No.	[Revision]

DA.N208.001[C]

All drawings may not be reproduced or distributed without prior permission from the architect.



BATESSMART

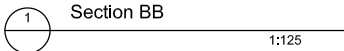
Melbourne 1 Nicholson Street
Melbourne VIC 3000 Australia
T 03 8664 6200 F 03 8664 6300
<http://www.batesSMART.com.au>

Sydney 43 Brisbane Street
Surry Hills NSW 2010 Australia
T 02 8354 5100 F 02 8354 5199
<http://www.batesSMART.com.au>

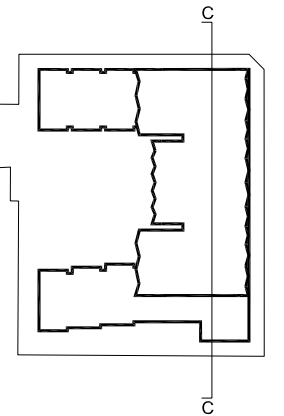
Bates Smart Architects Pty Ltd ABN 68 094 744 986

Lot N2
Section B-B

DA.N208.002[B]



All drawings may not be reproduced or distributed without prior permission from the architect.



887/2018

[illegible]Project

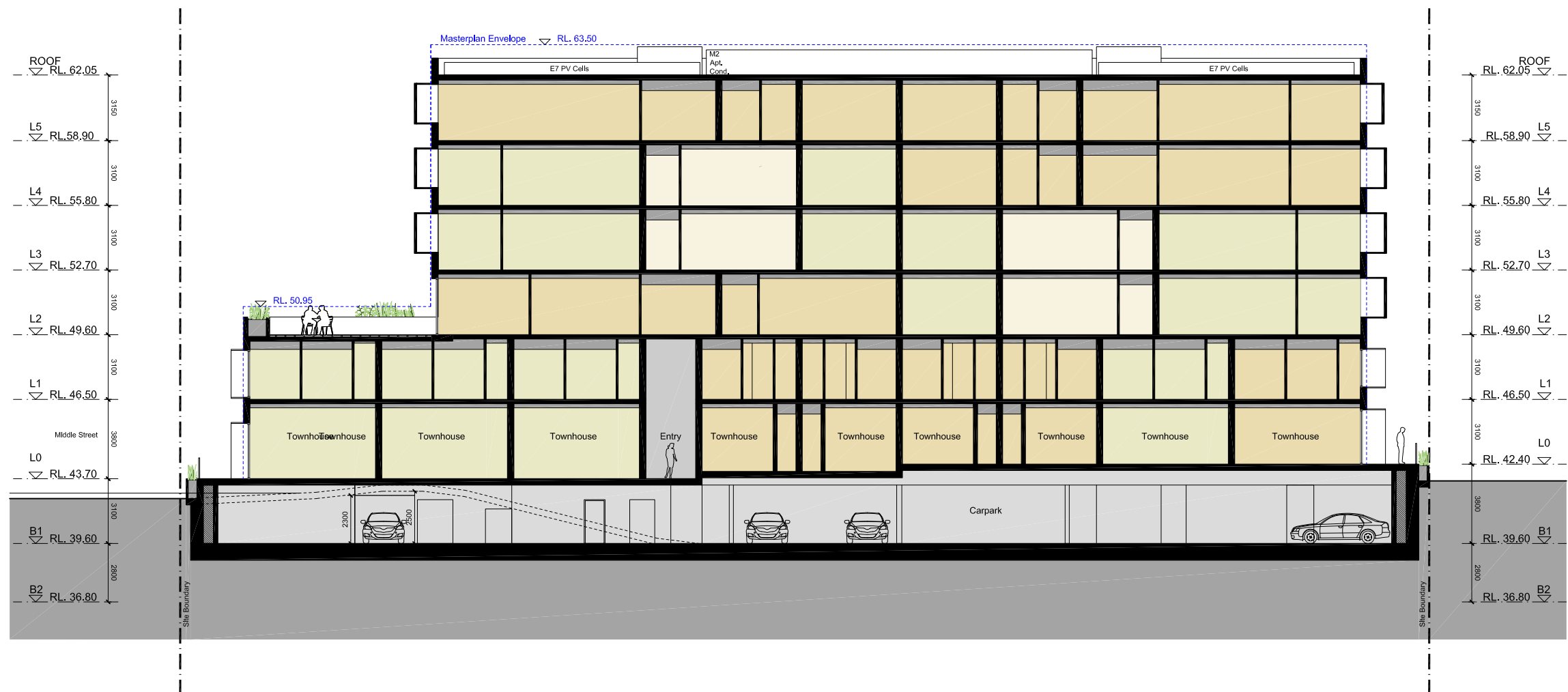
BATES SMART

Bates Smart Architects Pty Ltd ABN 68 094 740 986

**Lot N2, Newmarket Green
Barker St Randwick NSW**

Lot N2
Section C-C

DA.N208.003[B]



1 Section CC

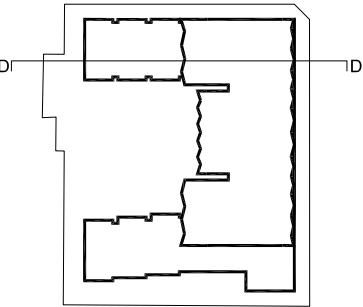
1:125

Check all dimensions and site conditions prior to commencement of any work, the purchase or ordering of any materials, fittings, plant, services or equipment and the preparation of shop drawings and/or the fabrication of any components.

All drawings to be read in conjunction with all architectural documents and all other consultants documents.

Do not scale drawings - refer to figured dimensions only. Any discrepancies shall immediately be referred to the architect for clarification.

All drawings may not be reproduced or distributed without prior permission from the architect.



DEVELOPMENT APPLICATION

887/2018

Randwick City Council
29 November 2018
Records Received

C	26/10/18	Draft DA Submission	CV	MA
B	20/09/17	DEP Amendments	SK	HC
A	26/05/17	Randwick DEP Submission	JJF	MA
Revision	Date	Description	Initial	Checked
Project				

BATESSMART

Melbourne 1 Nicholson Street
Melbourne VIC 3000 Australia
T 03 8664 6200 F 03 8664 6300
http://www.batesmart.com.au

Sydney 43 Brisbane Street
Surry Hills NSW 2010 Australia
T 02 8354 5100 F 02 8354 5199
http://www.batesmart.com.au

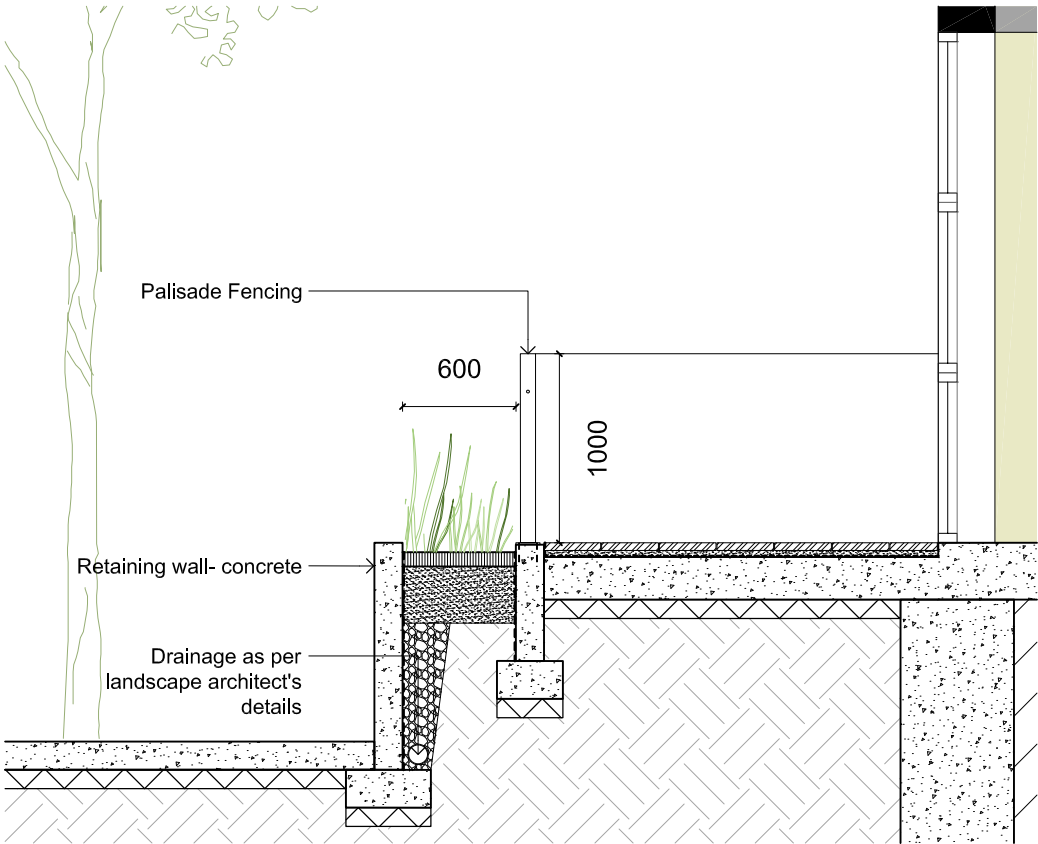
Bates Smart Architects Pty Ltd ABN 68 094 740 986

Lot N2, Newmarket Green
Barker St Randwick NSW

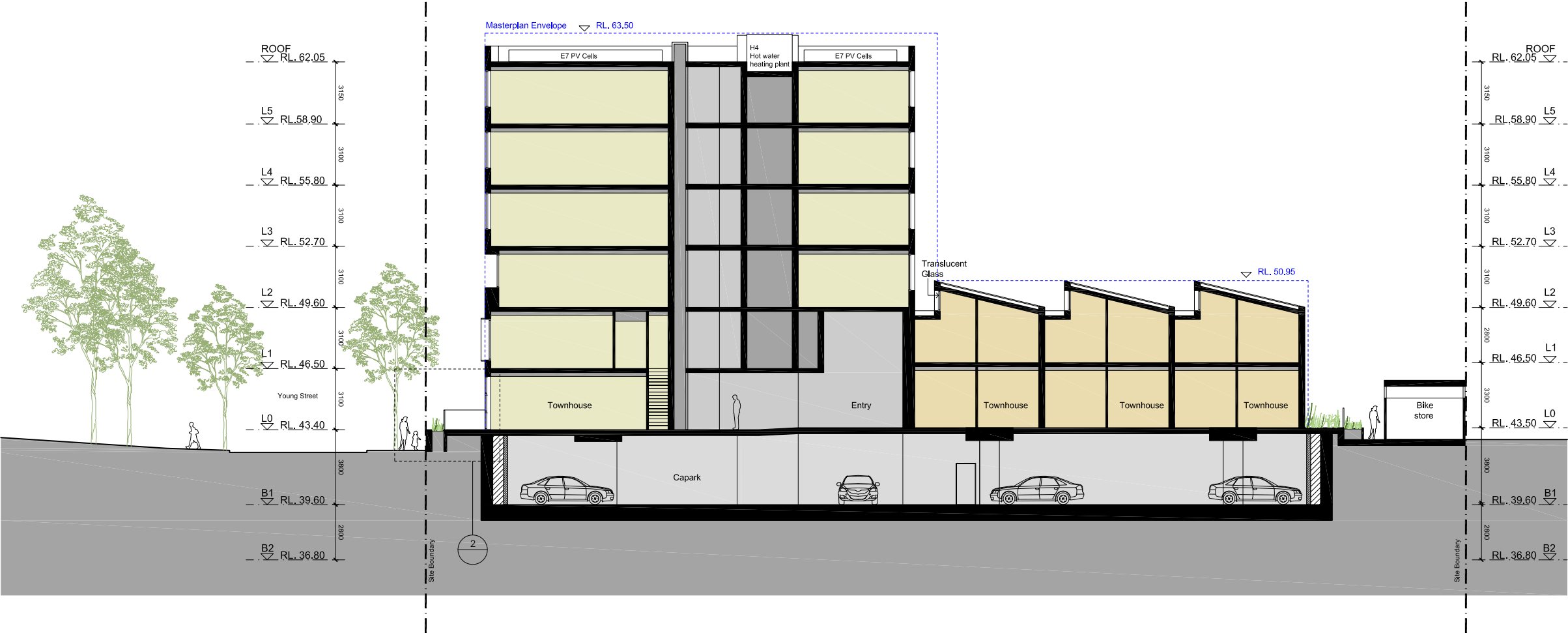
Lot N2
Section D-D

Scale	1:125@A1 / 1:250@A3
Drawn	JJF
Project No.	s11950A
Status	Preliminary
Plot Date	21/11/2018 12:37 PM
Plot File	S:\11900-11999\11950_a_cbus_n2\70_CAD\Plots\DA\DA.N208... ... 004[C].dwg
Drawing No.	[Revision]

DA.N208.004[C]



2 Detail Section
Planter to Young Street 1:20



1 Section DD 1:125